

International Badgers Club

Auction

6 NOV 2011 at: NORTHAMPTON

Catalogue

AUCTION RULES ARE AVAILABLE ON REQUEST FROM THE AUCTIONEER

Variety lists used are noted at the beginning of the section. If the variety letter is in brackets i.e. (E) this indicates that the nearest variety listed is E followed by the difference. Any illustrations are not to scale.

If catalogue numbers used differ from the World Catalogue Listing, the numbers have been taken from the appropriate variety list and not the World Catalogue.

The condition of the item is described as follows: a mix of descriptions may be used.

M = Mint. Totally unused, no marks.

AM = Almost mint. Consistent with age/storage. Very small marks or stitch marks.

MG = Font mint. Back, small tape/gum marks.

MB = Front mint. Tape/gum on the back.

VG = Very good. Marks ie stitch. Gum seeping to front.

G = Good. Heavy marks design intact.

F = Fair. Very heavy marks. Design damaged.

ABBREVIATIONS FOR UNIFORM BADGES: K = KHAKI, B = BLUE, F = FELT, P = PRINTED, N = NO WORDS, R = RIBBON, W = WOVEN

Example: KFN = Khaki Felt, No words, KF = Khaki felt WITH WORDS

RESULTS FROM THIS AUCTION WILL BE ATTACHED TO THE NEXT AUCTION CATALOGUE

CLOSING DATE FOR RECEIPT OF BIDS 29 OCTOBER 2011

For e-bidding please use the form available at www.intbc.org

Lot	CatNo	Variety	Condition	Description
<u>ENGLISH COUNTIES VARIETIES LIST 2011</u>				
1	10	K	M	WEST CUMBERLAND
2	11	H	M	DERBYS
3	12	J	VG	DORSET
4	12	W	M	DEVON
5	16	K	VG	GLOUCESTERSHIRE
6	16	P	MB	GLOUCESTERSHIRE
7	2	A	M	BERKSHIRE
8	20	M	M	HERTS
9	21	D	MB	HUNTS
10	23	E	M	ISLE OF WIGHT
11	24	I	M	JERSEY
12	25	P	M	KENT
13	25	U	M	KENT
14	3	M	M	BIRMINGHAM
15	34	M	VG	LONDON
16	36	L	M	MIDDLESEX
17	37	F	M	MONMOUTHSHIRE
18	38	L	MB	NORFOLK
19	4	L	M	BRISTOL
20	40	P	M	NORTHUMBERLAND
21	43	C	AM	RUTLAND
22	45	E	M	SOKE OF PETERBOROUGH



23	47	M	G/VG	STAFFORDSHIRE
24	5	N	M	BUCKINGHAMSHIRE
25	53	G	M	WARWICKSHIRE
26	62	D	AM	YORKSHIRE WEST RIDING
27	7	K	M	CHESHIRE
28	76	A	M	WEST MIDLANDS
29	9	C	M	CUMBERLAND N & E



LOT 341

ENGLISH DISTRICT VARIETIES LIST 2011

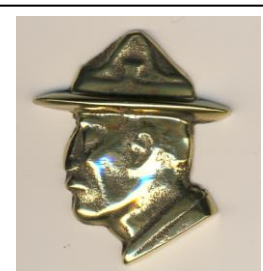
30	1/1	A, B	M	LUTON
31	101/1	A	M	KIRKBY
32	101/7	A	M	SEFTON NORTH
33	105/4	A	M	WEST BROMWICH
34	107/14	X1	M	DORE
35	108/12	A	M	NEWMARKET
36	109/10	A	M	TIPTON
37	11/1	B	M	BELPER
38	11/1	B	M	BELPER
39	14/10	A	M	PETERLEE
40	15/1	D	M	EPPING FOREST
41	15/2	A	AM	SOUTH EAST ESSEX
42	15/36	B	M	SOUTHEND WEST
43	15/8	A	M	BILLERICAY
44	18/16	A	M	GOSPORT
45	2/11	E	M	SLOUGH
46	20/2	C	M	EAST HERTS
47	28/4	A	M	LANCASTER
48	28/4	A	M	LANCASTER
49	3/19	A	M	COLE VALLEY
50	3/3	B	G/VG	SUTTON COLDFIELD
51	3/9	B	M	INNER BIRMINGHAM
52	31/1	C	M	LEICESTER
53	40/7	B	M	BLYTHE
54	41/4	(A)	VG	NOTTINGHAM
55	41/7	A	VG	WEST NOTTS
56	42/6	(A)	M	WALLINGFORD 38xF
57	46/4	A	M	CAMELOT
58	47/2	D	M	CANNOCK CHASE
59	47/2	X1	M	CANNOCK CHASE
60	47/3	D	M	LEEK & THE NMOORLANDS
61	47/5	A	M	STOKE ON TRENT & NEWCASTLE
62	48/3	B	M	STOKE ON TRENT & DISTRICT
63	48/3	B	VG	STOKE ON TRENT & DISTRICT
64	48/3	D	M	STOKE ON TRENT & DISTRICT
65	5/1	A	M	WENDOVER
66	53/2	A	M	SOLIHULL



LOT 474



LOT 459



LOT 467

67	59/11	B	M	DONCASTER
68	59/5-10	A	M	SHEFFIELD SET
69	7/2	A	M	ELLESMERE PORT
70	7/4	E	M	WIDNES
71	76/1	B	G/VG	WALSALL
72	76/1	C	M	WALSALL
73	76/2	B	M	WARLEY EAST
74	80/2	(B)	M	PADDINGTON & ST MARYLEBONE 55x56
75	80/3	E	M	POPLAR
76	82/16	A	M	HAVERING
77	82/19	A	M	WALTHAM FOREST SOUTH
78	82/2	B	M	SQUIRREL'S HEATH
79	83/3	C	M	BRENTFORD & CHISWICK
80	84/12	B	M	STREATHAM
81	84/15	A	M	BERMONDSEY SOUTHWARK
82	85/5	A	M	PENGE & BECKENHAM
83	85/7	C	M	EAST WICKHAM & WELLING
84	86/10	A	M	MORDEN & ST HELIER
85	93/7	A	M	EAST CLEVELAND
86	93/8	B	M	REDCAR & ESTON
87	96/8	G	M	BOLTON
88	97/10	B	M	SALFORD
89	97/10	D	M	SALFORD
90	99/2	(A)	AM	CLITHEROE 37xF
91	99/4	45XF	M	GT HARWOOD & RISHTON



LOT 182



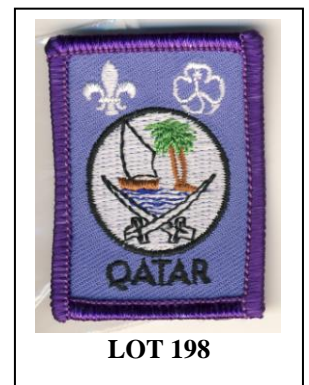
LOT 481

SCOTLAND Varieties list 2000

92	16	C	M	DUMFRIESSHIRE
93	17	C	M	DUNBARTONSHIRE
94	17	D	M	DUNBARTONSHIRE
95	19	B	M	EAST LOTHIAN
96	19	C	MG	EAST LOTHIAN
97	2	A	M	SCOTTISH HEADQUARTERS
98	2	B	M	CITY OF ABERDEEN
99	22/4	A	M	EAST NEUK
100	22/8	A	M	ST ANDREWS
101	22/8	DOUBLE	M	ST ANDREWS
102	23/7	A	M	TRYST
103	25	H	M	CITY OF GLASGOW
104	26/1	A	M	CENTRAL
105	27/1	A	M	NAIRN
106	28	(A)	M	INVERNESS-SHIRE dark brown
107	28	(A)	M	INVERNESS-SHIRE reddy brown
108	30	B	M	KINCARDINESHIRE
109	31/6	A	M	CANDERSIDE
110	34	A	M	MORAY
111	35	A	M	NORTH ARGYLL
112	36	B	M	ORKNEY



LOT 303



LOT 198

113	37	A	M	PEEBLESHIRE
114	38/1	B	M	KINROSS-SHIRE
115	4	B	M	LIPPEN ON ANGUS
116	40	D	M	RENFREWSHIRE
117	41	A	M	ROSS & CROMARTY
118	42/4	C	M	SUTHERLAND
119	43	C	M	ROXBURGHSHIRE
120	46	A	M	SOUTH ARGYLL
121	47	D	M	KIRKCUDBRIGHT
122	48	B	M	STIRLINGSHIRE
123	51	BOUND	M	WEST LOTHIAN 50x50
124	6/1	A	M	ISLE OF ARRAN
125	8	A	M	BANFSHIRE

WALES Varieties list 1999

126	17	F	M	MONTGOMERY
-----	----	---	---	------------

IRELAND Varieties list 1999

127	SAI 38	(A)	M	FASTNET REGION 57x65
-----	--------	-----	---	----------------------

UK MISC 2000 UK GUIDE 2004

128	MISC 20	B	M	CHURCH ARMY
129	UK 36	B	M	METROPOLITAN POLICE

UK SCOUT PROFICIENCY PRE 1967

130	CUB	BLK BK	M	ATHLETE, CYCLIST, ARTIST
131	CUB	BLK BK	M	ATHLETE, OBSERVER, SIGNALLER
132	CUB	BLK BK	M	COLLECTOR, GUIDE, GARDENER, HOUSE ORDERLY
133	CUB	BLK BK	M	OBSERVER, ENTERTAIN, GARDENER, HOUSE ORDERLY
134	CUB	BLK BK	M	SWIMMER, ARTIST, READER, HOUSE ORDERLY
135	CUB	BRN BK	AM	SWIMMER, NEEDLEWORK
136	CUB	PRINTED	VG	HANDCRAFT
137	SCOUT	BW	MG	ARTIST black back
138	SCOUT	KFN	AM	COOK
139	SCOUT	KW	M	MISSIONER white back
140	SCOUT	KW	M	ROPE SPINNER brown back
141	SCOUT	KW	M	SPORTSM, PIONEER, SPEAKER white back
142	SCOUT	WFN	VG	AMBULANCE
143	SENIOR	1/2 B	VG	SCIENTIST COLLECTIVE (BS)
144	SENIOR	BS	VG	PUBLIC HEALTH
145	SENIOR	BS	M	AIR OBSERVER
146	SENIOR	SS	M	SENIOR EXPLORER, HANDYMAN

UK SCOUT PROFICIENCY POST 1967

147	CUB	CLOSED	M	ENTERTAINER triangular & round (2)
148	CUB	CLOSED	M	HOBBIES (horse & chess piece) HANDYMAN (open & closed) (4)
149	CUB	CLOSED	M	SWIMMER, SIGNAL, HOBBIES, CYCLIST all red
150	INSTRUCT	ROUND	M	OARSMAN
151	SCOUT	CLOSED	M	AIR SPOTTER green
152	SCOUT	CLOSED	M	ARCHAEOLOG, LIFESAV, CANOE (WHITE BOY) ADV PION (GOLD)
153	SCOUT	CLOSED	M	CIVICS (RED), COMMUNICAT, ELEC, EXPLORER, HELMS 2.
154	SCOUT	CLOSED	M	METEOROLOGIST round instructor
155	SCOUT	CLOSED	M	SEAMAN



LOT 189



LOT 424

156	SCOUT	CLOSED	M	SEAMAN, COXWAIN'S MATE - both silver
157	SCOUT	CLOSED	M	SWIMMER round instructor
158	SCOUT	NYLON	M	COOK
159	SCOUT	NYLON	M	GARDENER
160	SCOUT	NYLON	M	PIONEER
161	SCOUT	OPEN	M/VG	CANOE, ANGLER, MODEL MAKER, ARCHAEL, MOUNTAIN
162	SCOUT	OPEN	M/VG	PHOTO, COOK, GYMN, ASTRON, EXPLORER
163	VENTURE	NYLON	M	VENTURE SCOUT AWARD

UK SCOUT UNIFORM

164	HON RANK	PADDED	M	RSM
165	ROVER	EMB	M	ISLE OF WIGHT CREW
166	ROVER	GARTERS	M	PAIR OF "SUPERIOR QUALITY"
167	SCOUT	KF	M	1ST CLASS BP
168	SEA	42MM	M	ANCHOR BADGE
169	SENIOR	PATROL	M	LIVINGSTONE 1/2B
170	STRIP	PRINTED	AM	NATIONAL SERVICE 50x20MM
171	TENDERFOOT	BFN	M	TENDERFOOT
172	see Guide Metal			

UK SCOUT METAL

173	HAT	CHROME	M	CM BS
174	HAT	MOTTLED	VG	ACM DYB
175	LAPEL	PIN	M	SENIOR SCOUT
176	PLUME	EPNS	VG	ASM NYLON BS
177	PLUME	LAST ISS	M	ASM
178	PLUME	LAST ISS	M	ASST SENIOR SM
179	PLUME	SILVER	VG	SM BRISTLE BP

UK GUIDE UNIFORM

180	HAT	BF	M	BEIGE
181	RANGER	STAR	M	BROWN BACK

UK GUIDE METAL

172	BROOCH		AM	FIRST CLASS (RED) (out of order)
182	BROOCH		VG	TRAINER (LAMP DESIGN)
183	PROMISE	BROOCH	M	CADET
184	PROMISE	BROOCH	AM	LAND RANGER + MINIATURE
185	PROMISE	BROOCH	AM	YOUNG LEADER + MINIATURE
186	THANKS	BROOCH	VG	GOLD COLOUR. NO DATE
187	THANKS	BROOCH	VG	NO DATE
188	THANKS	SILVER	AM	ON BAR 1928
189	TREFOIL	BRASS	VG	WITH "BP" (1st iss)

BSO/GA Varieties list 2000

190	B 2	A	M	BEIJING
191	D 2	D	M	DHAHRAN
192	E 1	(D)	M	EASTERN PROVINCE cut edge
193	E 3	F	M	EGYPT
194	K 2	(B)	M	KUWAIT embroidered
195	N 1	A	M	NEDJ
196	N 2	(B)	M	NANJING
197	O 2	B	M	OSLO

198	Q 1	(D)	M	QATAR thick scout badge
199	Q 1	B	M	QATAR
200	S 5	A	M	SINGAPORE TTS
201	S 7	(C)	M	STAVANGER

BSO/WE Varieties list 2000

202	1	B	M	BSWE
203	1	C	M	BSWE
204	1	J	VG/G	BSWE
205	B 1	A	M	BENELUX
206	B 3		M	BELGIUM LUXEMBOURG
207	M 2	A	M	MONCHENGLADBACH
208	M 2	A	M	MONCHENGLADBACH
209	O 1	D	M	OSNABRUCK
210	S 1	A	M	SAXONY
211	S 2	B	M	SENNELAGER
212	S 3	A	M	SENNELAGER TEUTOBURG
213	T 1	F	M	TEUTOBERG
214	W 1	B	M	WESER

JAMBOREE

215	JAP 4	PARTICIPANT	M	4TH NIPPON
216	NETH 94	PARTICIPANT	M	& SOUVENIR, BACKPATCH & TAPE
217	WORLD 14	PARTICIPANT	AM	NORJAM
218	WORLD 15	PARTICIPANT	M	CANADA
219	WORLD 16	PARTICIPANT	M	& BACKPATCH & 240mm TAPE
220	WORLD 17	PARTICIAPNT	M	& JIJ
221	WORLD 18		M	PENNANT 300x460mm
222	WORLD 18		M	YELLOW STAFF NECKER
223	WORLD 5/4	PARTICIPANT	VG	1937 (LIGHT BLUE BAR)

AUSTRALIA. Vic 1999. ACT,etc 2001. NAT,etc 2002

224	NSW 7	D	M	NEWCASTLE & HUNTER
225	NSW K2	C	M	KAMILAROI
226	NSW K8	A	M	KUBURA
227	NSW L1	G	M	LACHLAN
228	NSW L7	C	M	LIVERPOOL PLAINS
229	NSW M10	B	MG	MID WESTERN
230	NSW M19	E	M	MURRUMBIDGEE
231	NSW M19	I	M	MURRUMBIDGEE
232	NSW M3	G	M	MACQUIRE
233	NSW N 19		M	NORTH COAST (REGION) LARGE ISSUE AUS/JAM 2010
234	NSW N1	A	M	NAMBELLUNGA
235	NSW N1	B	M	NAMBELLUNGA
236	NSW N11	E	M	NORTH METROPOLITAN
237	NSW N11	F	M	NORTH METROPOLITAN
238	NSW N16	F	M	NORTHERN NEW ENGLAND
239	NSW N18	A	M	NORTHLAND
240	NSW N2	D	M	NAMOI
241	NSW N2	E	M	NAMOI
242	NSW N7	C	AM	NEWCASTLE & HUNTER

243	NSW N7	E	M	NEWCASTLE & HUNTER
244	NSW O1	B	M	ORAMA
245	NSW O2	C	M	OXLEY
246	NSW O2	E	M	OXLEY
247	NSW P3	A	M	PENNANT-HILLS BEECROFT
248	NSW S10	G	M	SOUTHERN BORDER
249	NSW S10 E	M	M	SOUTHERN BORDER
250	NSW S9	D	M	SOUTH WESTERN RIVERINA
251	NSW S9	F	M	SOUTH WESTERN RIVERINA
252	NSW T9	C	M	TWEED
253	NSW U1	A	M	ULITARA
254	NSW W1	F	MG	WAGGA WAGGA
255	NSW W1	F	M	WAGGA WAGGA
256	NSW W15	A	M	WOLLUMBIN
257	NSW W2	B	M	WALARMURA
258	NSW W8	B	M	WARRUMBUNGL
259	NSW W8	C	M	WARRUMBUNGL
260	NSW W9	A	M	WARRIGAL
261	TAS	EMB	M	CENTENARY
262	TAS B 1	A & B	M	BOWEN
263	TAS C 3	A	M	CLARENCE
264	TAS D 1	A	M	DERWENT VALLEY
265	TAS H 5	B	M	HUON
266	TAS K 2	(D)	M	KINGBOROUGH 2 different
267	TAS L 1	A	M	LAUNCESTON CENTRAL
268	TAS L 3	A	M	LAUNCESTON NORTH 2 different
269	TAS L 5		M	LAUNCESTON WEST 3 different
270	TAS L 6	A & C	M	LEVEN
271	TAS M 2	EMB	M	MERSEY
272	TAS N 3	B	M	NORTH ESK
273	TAS W 1	A	M	WELLINGTON
274	TAS W 4		M	WELLINGTON DISTRICT TASMANIA

NEW ZEALAND Varieties list 2008

275	BOP 11	C	M	WHAKATANE
276	CANT 5	A	M	BLACK DIAMOND
277	CANT 8	A	M	GREENSTONE
278	WPU 7	B	M	PIRIMAI

CANADA

279	ALTA H3	C	M	HERITAGE
280	ALTA R2	A	M	RILEY PARK
281	ALTA S12	A	M	ST GEORGES
282	ALTA S12	C	M	ST GEORGES
283	ALTA S13	D	M	ST ALBERT
284	ALTA S14	C	M	SOUTH PEMBINA
285	ALTA S4	A	M	SOUTHERN REGION
286	ALTA T1	B	M	THREE RIVERS

287	ALTA T2	C	M	TETE JAUNE TRAIL
288	ALTA T3	B	M	TAR SANDS
289	ALTA U1	A	M	UNIVERSITY
290	ALTA W1	A	M	WILD ROSE
291	ALTA W4	A	M	WHEATVIEW
292	ALTA W5	C	M	WHISPERING HILLS
293	ASC G2	A	M	GASPESIE
294	ASC H2	B	M	HEARST
295	ASC I1	B	M	ILES DE LA MADELEINE
296	BC 1	B	M	BRITISH COLUMBIA
297	BC 13	B	M	BURNABY MOUNTAIN NORTHVIEW
298	BC 15	A	M	BURNABY SOUTH WEST
299	BC 3	A	M	CENTENIAL
300	BC A1	A	M	ALBERN DISTRICT
301	BC A2	A	M	ARBUTUS VICTORIS
302	BC B10	B	M	RICHMOND BOGSIDE
303	BC B14	A	M	BURNABY CENTRE LAKE DIST
304	BC B7	B	M	BURNABY
305	BC B9	B	M	BULKLEY VALLEY
306	BC C11	B	M	COWICHAN VALLEY
307	BC C13	B	M	CAMOSUN
308	BC C14	B	M	CHILLIWACK
309	BC C16	C	M	COLUMBIA-YOHO
310	BC C2	C	M	CARLTON
311	BC C8	A	M	COWICHAN LAKE
312	MAN S 4	D	M	ST JOHN'S DISTRICT
313	NFLD 1	C	M	NEWFOUNDLAND
314	NFLD C1	A	M	CORNER BROOK
315	NFLD S2	A	M	ST JOHNS REGION
316	ONT N1	B	MB	NIAGARA DISTRICT
317	PEI 1	E	VG	PRINCE EDWARD ISLAND
318	PQ A1	A	M	ALGONKIN
319	PQ C2	C	M	CHATEAUGUAY VALLEY
320	PQ C5	A	M	CHATEAUGUAY DISTRICT
321	PQ D2	B	M	DORVAL
322	PQ F1	A	M	FORT CHIMO
323	PQ H1	C	M	HURON
324	PQ K1	A	M	KANIATARIO
325	PQ L1	A	MB	LAKE OF TWO MOUNTAINS
326	PQ L6	B	M	LAURENTIAN
327	PQ N2	C	M	MONTREAL NORTH-SHORE
328	PQ R1	C	M	RIVERVIEW
329	PQ R3	A	M	RICHLIEU VALLEY
330	PQ S10	A	M	STANSTEAD
331	PQ S12	A	M	SENECA
332	PQ S6	B	M	ST FRANCIS VALLEY
333	PQ V1	C	M	SIR WILLIAM VAN HORNE

334	PQ W1		M	75TH ANNIVERSARY
335	PQ W1	A	M	WESTERN MONTREAL
336	PQ W1	E	M	WESTERN MONTREAL
337	PQ W2	A	MB	WESTMOUNT
338	SASK 1	E	M	SASKATCHEWAN

AFRICA

339	CENT 10/11	B	MG	LEOPOLDVILLE
340	CENT 10/6	B	VG	KATANGA
341	CENT 10/7	A	M	KATANGA
342	KN 5	E	AM	NATAL
343	STHN 6	B	M	BASUTOLAND
344	WEST 5/1	A	MB	GAMBIA

WORLD JAMBOREE CONTINGENT

345	WORLD 18		M	UK SERVICE TEAM NORTH
346	WORLD 15		M	BADGER'S CLUB DISPLAY ARMBAND
347	WORLD 15		M	GERMANY
348	WORLD 15	STRIP	M	NEDERLAND
349	WORLD 17		M	SASKATCHEWAN, BELGUM
350	WORLD 18		M	BSA HQ STAFF, CONTONGENT & BACKPATCH
351	WORLD 18		M	REMBRANT

EUROPE

352	CYP 1	A	M	CYPRUS
353	DEN/DDS A4		M	ABSALON
354	DEN/DDS A4	RIBBON	M	ABSALON 33xF
355	DEN/DDS F1		M	FREDERIKSBORG AMTS
356	DEN/DDS S1		M	SOBORG
357	DEN/DGSA A1		M	ADAL
358	DEN/DGSA A5		M	AMAGERBRO dull orange. Design 33x43
359	DEN/DGSA A5		M	AMAGERBRO orange. Design 32x40
360	DEN/DGSA A6		M	AMAGERLAND
361	DEN/DGSA B1		M	BAVNEHOJ
362	DEN/DGSA D2		M	DANEHOF
363	DEN/DGSA F2		M	FREDERIKSBORG
364	DEN/DGSA G2		M	GODTHAB
365	DEN/DGSA H1		VG	HARALD BLATLAND
366	DEN/DGSA K2		M	KNUDLAVARD
367	DEN/DGSA K7		M	KRONBORG
368	DEN/DGSA L1		M	LIMFJORD
369	DEN/DGSA N3		M	NORREJYDSKE
370	DEN/DGSA O3		M	ODIN
371	DEN/DGSA O4		M	OLE ROMER
372	DEN/DGSA R3		M	REVENTLOW
373	DEN/DGSA S3		M	SKOVVEJENS
374	FSC/MISC 7		M	EXTENSION
375	MALTA G 2	E	M	GRIFFIN
376	MALTA S 1	B	M	SOUTH
377	NETH R 2	PRINTED	M	ROTTERDAM green

378	NETH R 2	RIBBON	M	ROTTERDAM brown
379	NETH R 2	RIBBON	M	ROTTERDAM green
380	NETH R 2	RIBBON	M	ROTTERDAM turquoise
381	NR/AUSRIA 2		M	OPB WIEN
382	SSF/DIST A2 A		M	ALVSBORGS SODRA
383	SSF/DIST A3 B		M	ANGERMANLAND
384	SSF/DIST B1 B		M	BIRKA
385	SSF/DIST D1 C		M	DALARNAS
386	SSF/DIST G1 A		M	GASTRIKE
387	SSF/DIST G2 C		M	GOTEBORG
388	SSF/DIST G2 C		M	GOTEBORG
389	SSF/DIST H1 A		M	HALLAND
390	SSF/DIST H1 B		M	HALLAND
391	SSF/DIST K 4		B	M KULLA
392	SSF/DIST K1 A		M	KALMARSUND
393	SSF/DIST K3		M	KRONOBERG
394	SSF/DIST K4 C		M	KULLA
395	SSF/DIST N1 C		M	NORRA SMALAND
396	SSF/DIST N1 D		M	NORRA SMALAND
397	SSF/DIST N2 A		M	NORRBOTTENS
398	SSF/DIST O1 B		M	OREBRO LAN
399	SSF/DIST R1 A		M	ROSLAGENS
400	SSF/DIST S1 A		M	SKARABORG
401	SSF/DIST S1 C		M	SKARABORG
402	SSF/DIST S3 C		M	SODERMENLANDS
403	SSF/DIST S4 A		M	SODERTORN
404	SSF/DIST S6 A		M	SODRA SKANE
405	SSF/DIST U1 A		M	UPPLANDS SLATTENS
406	SSF/DIST V1 C		M	VARMLAND
407	SSF/DIST V3 B		M	VASTMANLAND
408	SSF/DIST V3 D		M	VASTMANLAND
409	SSF/DOST A3		A	M ANGERMANLAND
410	SSF/KRE M 1		A	M MALMO

REST OF THE WORLD

411	WI/BER 1	C	M	BERMUDA
412	WI/TRI 1	A	M	TRINIDAD

MISCELLANEOUS

413	1986		M	4TH WORLD COLLECTORS MEET CHALFONT
414	1990		M	9TH WORLD COLLECTORS MEET OVERSTONE
415	1991		M	10TH WORLD COLLECTORS MEET LEUVEN
416	AUSTRALIA		M	13TH VENTURE 2006
417	AUSTRALIA		M	14TH VENTURE 2009
418	AUSTRALIA		M	21ST ASU JAMBOREE 2007
419	AUSTRALIA		M	22ND AUS JAMBOREE 2010
420	AUSTRALIA		M	AUS CENTENARY POLICE SCOUTERS CUBOREE 2008
421	AUSTRALIA CUB		VG	ARTIST PRE 1967 STYLE

422	AUSTRALIA	GUIDE	VG	12 DIFF 40-42mm PROFICIENCY
423	AUSTRALIA	GUIDE PROMISE	M	GUIDE, RANGER, RANGER MINIATURE PINS
424	AUSTRALIA	WORLD BADGE	G	ENAMELLED CHARM for bracelet/watch
425	AZERBIJAN		M	1ST NATIONAL JAMBOREE 2000
426	BADGERS CLUB		PIN M	BRONZE
427	BRAZIL	PIN	M	MINIATURE MEMBERSHIP
428	CANADA		M	CANADIAN JAMBOREES BACKPATCH
429	CANADA		M	MISSISSAUGA BACKPATCH
430	DENMARK		M	DDS NATIONAL JAMBOREE 1959
431	DENMARK		M	DDS NATIONAL JAMBOREE 1989
432	DENMARK		M	DDS SEA SCOUT CAMPS 1990, 91, 92, 2002
433	DENMARK		M	KFUM NATIONAL JAMBOREE 1985
434	DENMARK		M	KFUM NATIONAL JAMBOREE 2000
435	DENMARK	BROOCH	M	DENMARK KFUK PROMISE + MINIATURE
436	DENMARK	RIBBON	M	KFUK 1960's SHOULDER EMBLEM
437	ESTONIA		M	W/JAM IN EXILE 1984. 5TH NJ ESTONIA CANADA 1982
438	ESTONIA		M	W/JAM IN EXILE CANADA 1972. 1962 UKRAINE SIE JAM USA
439	FRANCE	BROOCH	VG	FFE PROMISE
440	GERMANY	PIN	M	GUIDE PROMISE
441	GREECE		M	75TH ANNIVERSARY OF SCOUTING
442	HORSE	BRASS	AM	SCOUT BADGE IN LAUREL WREATH
443	INDIA	RIBBON	M	1930's/*1940's TENDERFOOT
444	INDONESIA	PIN	M	MEMBERSHIP
445	IRAN		M	NATIONAL MUSIC CAMP 1976
446	IRELAND	FELT	M	SCOUT MASTER STRIP
447	ISRAEL		M	NATIONAL JAMBOREE 2004
448	JAPAN	PIN	M	MEMBERSHIP LAPEL
449	KOREA	PIN	M	1990 NATIONAL JAMBOREE
450	LUXEMBOURG		PIN AM	GUIDE PROMISE
451	MACAU	PIN	M	MEMBERSHIP (LAPEL)
452	MALAY		M	NATIONAL JAMBORETTE 1961
453	MALAYSIA		M	2ND NATIONAL JAMBOREE 1970
454	MALAYSIA	PIN	M	MEMBERSHIP
455	MALTA		M	NATIONAL CAMP 2003
456	MALTA		M	NATIONAL CAMP 2004
457	MONGOLIA		M	1ST NATIONAL JAMBOREE 1996
458	MONGOLIA		M	4TH NATIONAL JAMBOREE 2009
459	MUG CHINA		AM	VOLE SCOUT SEE PHOTO. 60mm HIGH
460	NETH ANTILLES	PIN	VG	GUIDE PROMISE
461	NETHERLANDS	RIBBON	M	2ND CLASS
462	NEW ZEALAND		M	5TH ASIA PACIFIC MOOT 1986
463	NORWAY	PIN	M	SCOUT & GUIDE MINIATURE LAPEL
464	PARAGUAY	PIN	M	GUIDE PROMISE
465	PHILIPPINES		M	2ND NATIONAL VENTURE 2003
466	PNG	PIN	M	MEMBERSHIP LAPEL
467	RELIEF	BRASS	M	SIDE VIEW BP 60 X 60mm
468	RHODESIA	PIN	VG	MINIATURE GUIDE PROMISE

469	SAUDI		M	RIYADH BRITISH SCHOOL SCOUT GROUP
470	SINGAPORE	PIN	M	MINIATURE GUIDE PROMISE
471	SOUTH AFRICA	GUIDE WARRANT	M	BROWNIE, GUIDE, SEA RANGER PINS
472	SOUTH AFRICA	PIN	M	MEMBERSHIP FOR NON-WHITE GIRL GUIDES
473	SPAIN	MEMBERSHIP	M	ASDE EARLY CUB PROMISE
474	STATUETTE	SCOUT	M	57mm HIGH SEE PHOTO
475	SWEDEN		M	NATIONAL JAMBOREE 1965
476	SWISS	PIN	M	GUIDE PROMISE & FRIENDSHIP
477	TANZANIA		M	6TH NATIONAL JAMBOREE 2009
478	TAS	EMB	M	MOONEE VALLEY & 100 YEAR
479	UK		M	YEAR OF THE SCOUT 1982 BACKPATCH
480	UK	BROOCH	M	"THANK YOU" (BOGUK)
481	UK	BROOCH	M	SILVER BOGUK (Best of Guiding UK)
482	UK	GOLLY	M	GOLDEN SHRED WHITE FLAG, HAT
483	WORLD		M	WORLD BADGE BACKPATCH
484	ZIMBABWE	PIN	M	GUIDE

JAMBOREE ALL MINT CONDITION

Illustrations for the following lots can be found at www.intbc.org For members who do not have internet access and would like a printed copy, please contact the Magazine Distributor (John Cheek) for a free copy

485	W/J 13	PARTICIPANT & BACKPATCH
486	W/J 14	PARTICIPANT, JOIN IN JAMBOREE. 75mm & BACKPATCH
487	W/J 15	BSA UNIFORM & BACKPATCH
488	W/J 15	CANADA HIKEMASTER '83, HIKEMASTER '82 IN PREPARATION FOR WJ '83, CANADIAN ROCKIES, CHAPLAIN, HEALTH SERVICES
489	W/J/15	ALBERTA UNIFORM & BACKPATCH, NORTH WEST TERRITORIES, INTERIOR REGION, NORTHERN ALBERTA REGION
490	W/J 15	WORLD BROTHERHOOD THROUGH SCOUTING, RCMP GRC
491	W/J 15	JOIN IN JAMBOREE 50 & 70MM. USA. POCKET FLAP SHAPED PATCH
492	W/J 15	NOVA SCOTIA. CANADA CURVED STRIP, MANITOBA. ONTARIO. QUEBEC.
493	W/J 15	FISH & WILDLIFE SHOOTING PROGRAM, SOSSI 60x100mm. SOSSI 95x70mm. CANADIAN CHAPTER BADGERS CLUB. BADGERS CLUB DISPLAY.
494	W/J 16	WORLD JAMBOREE SPONSOR. AUSTRALIAN BICENTENARY. JOIN IN JAMBOREE. NEDERLANDS CONTINGENT NAMETAPE. PLASTIC CARD.
495	W/J 17	PARTICIPANT. JOIN IN JAMBOREE
496	W/J 17	SPONSOR BADGE. CONTINGENT STAFF GRAFFITI-NEDERI. REMBRANT. MONDRIAAN TROEP. KAREL APPEL. VAN GOGH.
497	W/J 19	HOLANDES. BACKPATCH & BOUND PARTICIPANT TYPE BADGE.
498	W/J 18	PARTICIPANT, 4 STRIPS, BACKPATCH. SOUVENIR
499	W/J 18	AMSTERDAM, IFOFSAG, HOT AIR BALLOON STAFF. UNIT EXHIBITS
500	W/J 18	LUXEMBOURG. BANGLADESH CONT. ITALIA. NZ. HK. BRASIL.
501	W/J 18	CHINA. PROTUGAL. BELGIUM. MEXICO.
502	W/J 18	SECURITY INT. SERV. STAFF. SECURITY & HEALTH. RADIO PAGWSJ. FRIENDSHIP AWARD. RELIGIOUS PROGRAMME & JAMBOREE SECRETARY NAMETAPES.
503	W/J 18	AUSTRALIA. GERMANY. HELLENIC. SWISS. JAPAN. GHANA. SWEDEN. TUNISIA.
504	W/J 18	BANGLADESH DELEGATION. SINGAPORE. LIECHTENSTEIN. KOREA. SCANDINAVIA.
505	W/J 18	AUSTRIA. CANADA. GIBRALTAR. SINGAPORE. HK.
506	W/J 18	1995/1937 DOUBLE. NETHERLANDS (WHITE & GREEN)
507	W/J 18	GUESTS RECEPTION TEAM. HOSTS. FUTURE STARTS TODAY.
508	W/J 18	UK CONT & BACKPATCH